

Parkheath

Sold on Service

Kingsgate Road NW6

£1,500 PCM (£346 per week) - Camden Band C



Spacious split level 1 bedroom apartment

Wooden floors

Generous reception/dining room

Separate fitted kitchen

Occupying the 1st floor (top) of a mid-terrace period

High ceilings

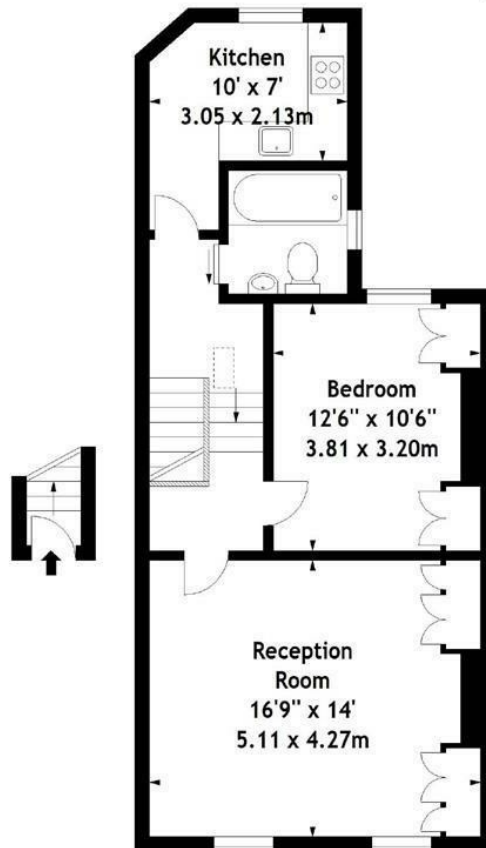
Bedroom with fitted storage

Close to all Kilburn and West Hampstead amenities

South Hampstead Office 020 7625 4567

West Hampstead Office 020 7794 7111

Kingsgate Road, NW6
Approx. Gross Internal Area
605 Sq Ft - 56.20 Sq M



Ground Floor

Entrance
12 sqft

First Floor 593 sqft

Measured in accordance with RICS guidelines. Every attempt is made to ensure accuracy, however all measurements are approximate. This floor plan is for illustrative purposes only and is not to scale.

© Datagraphy Ltd 2014

Photographs * Floorplans * Virtual Tours
Tel: 0845 643 4401 www.datagraphy.com

The particulars do not constitute part of an offer or contract. The particulars, including text, photographs and plans, are for the guidance only of prospective purchasers/tenants and must not be relied upon as statements of fact. The descriptions provided therein represent the opinion of the author and whilst given in good faith should not be construed as statements of fact. Nothing in these particulars shall be deemed a statement that the property is in good condition or otherwise or that any services or facilities are in good working order. All measurements are approximate